

WELCOME

Wairarapa is a region of big skies, wide valleys and small towns full of character at the heart of the Classic New Zealand Wine Trail.

SOME OF OUR FAVOURITE THINGS:

Tui Brewery at Mangatainoka – home of all things Tui and a top spot for a tasting, a tour and retail fun.

Pūkaha, National Wildlife Centre – stop at Mount Bruce on SH2 and see New Zealand's endangered birds and animals.

Masterton's beautiful Queen Elizabeth Park has a great playground, paddle boats, lake and miniature train. Explore Aratoi Museum of Art and History, ConArt and The Woolshed.

Riversdale and Castlepoint – surf, swim, fish, play golf and walk up to the Castlepoint lighthouse. Tinui is home of the first ANZAC Day service ever held. Visit the church and walk up to the cross.

Carterton – gateway to Stonehenge Aotearoa, the Waiohine Gorge and the accessible wilderness of Tararua Forest Park.

Greytown, a country village with metropolitan style and sophisticated boutique shopping.

Taste some of New Zealand's best wines at vineyards across Wairarapa Wine Country.

Palliser Bay – walk to the Putangirua Pinnacles, see fur seals, Ngawi fishing village and Cape Palliser Lighthouse.

Bike the Remutaka Cycle Trail or explore Martinborough as you cycle the vines.

See the world's last remaining Fell engine, on display at the Fell Locomotive Museum in Featherston.

SEE, DO, STAY

TUI BREWERY

Visit the iconic Tui Brewery – home of all things Tui. Open 7 days. Stop in for a beer tasting, some tasty tucker from the kitchen, a tour or have a look around our free HiTui museum & shop. Tours run daily 11.30am and 2.30pm. (Tour bookings recommended.)



State Highway 2, Mangatainoka
T 06 376 0815 W tuihi.co.nz

PŪKAHA, NATIONAL WILDLIFE CENTRE

We are a sanctuary for native wildlife. Our forest is home to wild kōkako and kākā, inside our aviaries we breed endangered birds for release. Learn about conservation with four ranger talks daily. Enjoy kai at Kākā Café. Open daily 9am to 6pm (4:30pm winter).



State Highway 2, north of Masterton
T 06 375 8004 W pukaha.org.nz

ARATOI – WAIRARAPA MUSEUM OF ART AND HISTORY

Explore the cultural heart of the Wairarapa! Our Museum is the place where art, history and stories are told. Book a unique collection tour to find out what goes on behind the scenes. Gift Shop & Café. Open daily 10am – 4pm.



12 Bruce Street, Masterton
T 06 370 0001 W aratoi.org.nz

CONART GALLERY & STUDIOS

Container galleries, working studios and outdoor spaces where Wairarapa artists create, exhibit and sell their unique work. Art changes monthly and includes painting, photography, jewellery, ceramics and more. Open 10am-4.30pm Wed-Sun and most public holidays.



Cnr Bruce and Queen Streets, Masterton
E conart@conart.nz W conart.nz

THE WOOL SHED MUSEUM

The Wool Shed preserves and displays New Zealand's iconic rural heritage through interactive, fun and informative exhibitions in two historic woolsheds in Masterton. Also home to Golden Shears – the world-famous international shearing and wool handling championships.



12 Dixon Street, Masterton
T 06 378 8008 W thewoolshednz.com

PAUA WORLD

Wairarapa's unique destination. We have an extensive range of quality gifts, souvenirs, jewellery, pouamu and highly polished pieces for your crafting projects. All the family can enjoy the visit, with a picnic area, playground and plenty of parking. Open 7 days.



54 Kent St, Carterton
T 06 379 4247 W pauaworld.com

STONEHENGE AOTEAROA

Situated in the beautiful Wairarapa countryside, Stonehenge Aotearoa is a window into the past where you can rediscover the knowledge of your ancestors. It incorporates ancient Egyptian, Babylonian, Celtic and Polynesian star lore. Guided and self-guided tours available.



51 Ahiauru Road, Carterton T 06 377 1600
W stonehenge-aotearoa.co.nz

SCHOC CHOCOLATES

Passion that melts in your mouth and stays in the mind. Taste the difference, challenge your senses at our gourmet studio. The Schoc range features 85 flavours, from classic strawberry and caramel to lime/chilli or smoked teal! Open 7 days.



177 Main Street, Greytown
T 06 304 8960 W schoc.co.nz

COBBLESTONES MUSEUM

Visit our heritage village and experience life in early Wairarapa. See historic buildings, horse drawn vehicles, farm machinery and fascinating displays. Open hours 10am to 4pm. Daily Summer: 1 Oct to 31 May. Winter 1 Jun to 30 Sept – Fri, Sat, Sun, Mon.



169 Main Street, Greytown T 06 304 9687
W cobblestonesmuseum.org.nz

STAR FIELD MARTINBOROUGH

Martinborough's first premium dark sky experience. Enjoy an evening of star gazing with experienced astronomy and telescope guides. Located just 10 minutes from Martinborough Wine Village. For departure times & more information visit our website.



115B Ruakokoputuna Road, Martinborough
W starfield.nz

MARTINBOROUGH GOURMET WINE TOUR

Visit Martinborough on this all inclusive wine tour. Visit 4 boutique vineyards, enjoy lunch in the iconic village and meet some of the families behind the vineyards. All day tour departing Wellington or Wairarapa towns.



T 0800 471 227 International: +64 4 472 0869
W wellingtongtours.co.nz

GREEN JERSEY EXPLORER TOURS

Ride the vines in Martinborough, explore the Palliser coast and ride the Remutaka Cycle Trail. Great rides, great guides, great fun. We offer everything from freedom cycle hire to multi-day adventures, hens parties and corporate activities. Explore our world.



Kitchener Street, Martinborough (opposite BP)
T 027BIKEGUY W greenjersey.co.nz

MARTINBOROUGH WINE WALKS

Guided and authentic, walking wine tasting experiences hosted by locals who eat, drink and sleep wine. Entertaining, relaxed and informative, go behind the scenes to meet wine producers not usually accessible to the public.



Martinborough Wine Merchants T 06 3069040
W martinboroughwinewalks.co.nz

OLIVO OLIVE OIL

Visit our award winning olive grove and tasting room to try our extra virgin and innovative infused oils (7 including cumin). Open weekends and public holidays and other times by appointment. Learn more about olive oil in our Tree to Table tour. See Martinborough map.



136 Hinakura Road, Martinborough
T 06 306 9074 W olivo.co.nz

PALLISER BAY TOUR

Get off the beaten track, visit the Cape Palliser lighthouse, and on the way home stop in Martinborough for wine tasting. Lunch at the historic Lake Ferry Hotel – try their famous fish and chips. This tour promises unforgettable memories of New Zealand's diverse scenery.



T 0800 471 227 International: +64 4 472 0869
W wellingtongtours.co.nz

WHAREAMA COASTAL WALK

The Whareama Coastal Walk is a fantastic, 2 or 3 day, fully-catered walking experience over private farmland with isolated Wairarapa coastline views. We also offer 'single day walks' and self-catered options – see our website for more details!



268 Ica Rd, Whareama, Masterton
T 06 372 3722 W whareamawalk.co.nz

FELL LOCOMOTIVE MUSEUM

Experience a unique aspect of New Zealand's railway heritage. Learn about the unusual 'Fell' locomotives and the Remutaka Incline, the steepest railway line in New Zealand. Displays include audio-visual show, photographs, models and social history. Wide range of souvenirs available.



Cnr State Highway 2 & Lyon Street, Featherston
T 06 308 9379 W fellmuseum.org.nz

LONE STAR

Using only the freshest, local ingredients possible, Lone Star has been serving up legendary dishes for over 30 years. Try our famous Dixie Chicken, Lasso of Hog or stack of Ribs! Open Monday – Saturday from 3pm, Sunday from 11am.



49 Dixon Street, Masterton
T 06 377 7308 W lonestar.co.nz

THE FARRIERS BAR & EATERY

An all-occasion pub, obsessed with great food, looking after people and daring to be a little different. We're also the home of the Wairarapa Farmers' Market, held every Saturday morning. Find us just off the north end roundabout, SH2.



4 Queen Street, Masterton
T 06 377 1102 W thefarriers.co.nz

THE GRILL

The Grill at Solway Park offers 'Contemporary Country Cuisine', using quality local and international ingredients. The Grill specialises in great steaks including the grain-finished Wakanui Angus, for those who appreciate quality beef. Open daily from 6pm.



Cophorne Solway Park Wairarapa, Masterton
T 06 370 0513 W thegrillsolway.co.nz

SALUTÉ | TAPAS RESTAURANT & WINE BAR

Truly a "must visit" for locals and tourists alike. Saluté offers a Mediterranean-inspired menu featuring fresh, seasonal and local ingredients expertly prepared and served in an upscale yet relaxed setting. Their extensive wine list features top New Zealand and international wines.



83 Main Street, Greytown
T 06 304 9825 W salute.net.nz

THE GREYTOWN HOTEL

Wairarapa's oldest pub is the perfect place for drinks in Greytown. The philosophy of our Restaurant 1860 is to bring market fresh, seasonal dishes to your table. All our meals are prepared from start to finish in our kitchen.



33 Main Street, Greytown
T 06 304 9138 W greytownhotel.co.nz

PUKEMANU BAR & EATERY

Martinborough's friendly local, right on The Square. Home of The Bottle-O Martinborough and E10 Restaurant where our chef takes pub food to a new level. Generous family dining and outdoor area.



The Square, Martinborough T 06 306 9606
W pukemanu.co.nz

THE WHITE SWAN

Gorgeous boutique country hotel with exceptional cuisine and glorious wine also offering stunning accommodation. Our wine shop and bar has the largest selection of local wines by the glass – taste and purchase.



109 Main Street, Greytown
T 06 304 8894 W thewhiteswan.co.nz

LAKE FERRY HOTEL

With breath-taking views over Palliser Bay, the Lake Ferry Hotel offers a variety of accommodation and is a popular restaurant with a menu based around the local catch. A casual bar menu is also available. The hotel can also host special occasions and weddings.



2 Lake Ferry Road, Lake Ferry, South Wairarapa
T 06 3077831 W lakeferryhotel.co.nz

THE MARTINBOROUGH HOTEL AND UNION SQUARE BISTRO & BAR

Gorgeous rooms and delicious food in the heart of the Village. Unwind in character-filled rooms, each one unique. Enjoy lunch, dinner or drinks at our bistro/bar Union Square – listed in Cuisine Magazine's Top 100 NZ restaurants.



10 Memorial Square, Martinborough 5711
T 06 306 9350 W martinboroughhotel.co.nz

PEPPERS PAREHUA

Experience the rolling green hills of Martinborough from the comforts of your luxury accommodation at Peppers Parehua country estate. Enjoy dinner in The Pavilion Restaurant, a picnic lunch by the lake, relax by the swimming pool or play a game of tennis.



52 New York Street West, Martinborough
T 06 306 8405 W peppers.co.nz/parehua/

DISCOVERY MOTOR LODGE

Discover affordable luxury in the heart of Kuripuni, close to cafes, restaurants and shops. 17 modern units with a variety of options to suit. All units have flat screen TV and SKY Guest Select. Some with heat pumps and spa baths. Come stay and relax.



210 Chapel Street, Kuripuni, Masterton
T 0800 188 515 W discovery.co.nz

BK'S CHARDONNAY MOTOR LODGE

Luxurious, affordable accommodation for business, leisure or special occasion, just minutes from Masterton's town centre. 18 ground floor studios, 1 & 2 bedroom suites including 2 accessible units, 7 units with corner spa baths. Sky TV Guest Select with 50+ channels.



274 High St, Solway, Masterton
T 0800 222 880 W bkschardonnay.co.nz

ACORN ESTATE MOTEL

Oak trees, gardens, playground, swimming pool and private spa pool make this a special motel. Studios, 1 bedroom and large family units: 2 with wheelchair access, wet rooms. Free fast WiFi, SKY, pet friendly. Close to Cophorne Solway, showgrounds and town centre.



6 Manchester Street, Solway, Masterton
T 0800 222 191 W acornestate.co.nz

MAWLEY HOLIDAY PARK & CAMPING GROUND

The perfect base from which to explore everything Masterton and the Wairarapa has to offer. Nestled in a beautiful park-like setting you'll find quality accommodation; ensuite units, cabins, power/non-power sites. A very warm welcome awaits you.



5 Oxford Street, Masterton
T 06 378 6454 W mawleypark.co.nz

MARTINBOROUGH TOP 10 HOLIDAY PARK

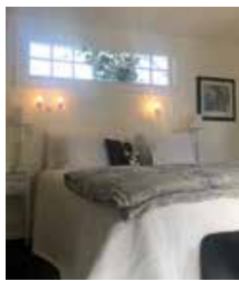
Enjoy free WiFi, spotless facilities, bike hire service and tranquil location all within easy walk of the town centre and wineries. Apartment, studios, great value cabins, powered and tent sites, with beautiful views to the Martinborough hills.



10 Vintners Lane, Martinborough
T 0800 780 909
W martinboroughtop10.co.nz

AYLSTONE BOUTIQUE RETREAT

Set within a delightful garden, Aylstone has five beautifully appointed rooms overlooking vineyards and the Tararua mountains. Super king beds and complimentary WiFi. Located amongst Martinborough's best vineyards, an easy 10 minute walk to Martinborough Square.



19 Huangarua Road, Martinborough
E info@aylstone.co.nz W aylstone.co.nz

THE CLAREMONT MOTEL & APARTMENTS

Affordable tranquility, privacy & comfort, in a self-contained apartment, luxurious executive studio, or motel unit. 23 self-catering units (many with spa baths). Free WiFi. Bikes for hire onsite.



38 Regent Street, Martinborough
E host@thclaremont.co.nz
T 0800 809 162 W thclaremont.co.nz

DE VINE MARTINBOROUGH LUXURY HOLIDAY HOMES

Private self-contained homes all with spa pool, spa bath, 50" TV, DVD, surround sound, BBQ, free WiFi in some of the homes. In the heart of Martinborough – walk 4 minutes to the Village.



26, 14 and 14a Cologne Street, Martinborough
T 027 687 2657
W devinemartinborough.co.nz

OUR TOWNS

WE LOVE OUR QUIRKY TOWNS – TOGETHER OR SOLO THEY'RE GREAT TO VISIT:



A wine village packed with charm **Martinborough** is surrounded by more than 20 cellar doors, most within easy walking or cycling distance from each other. Hire a bike, check them out and spot murals as you go.



Featherston's history is strongly linked to the railway – these days it's the spot to rest and refuel after biking the Remutaka Cycle Trail. Stock up at C'est Cheese for deli delights. As a Booktown, literature is celebrated with many book stores.



Good looking **Greytown** is a Victorian gem. Stop for good food, great coffee and sensational Schoc chocolate. Retail therapy in the distinctive stores is highly recommended. See the history of the town revealed at Cobblestones Museum.



Carterton has art at its heart – see it on panels around town. Explore Paua World and for artisan bread and pastries head to Clareville Bakery. Carterton is also the gateway to the Tararua Forest Park.

Masterton's Queen Elizabeth Park is a mecca for families. Check out Kuripuni Village, ten-pin bowling, golf courses, the indoor swimming pool and movie theatres. Manukura, the white Kiwi, is a close neighbour at Pūkaha, National Wildlife Centre.

WAIRARAPA VISITOR GUIDE 2020



www.wairarapanz.com



OUR COAST

Castlepoint and Riversdale – swim, surf, fish and walk up to the Castlepoint lighthouse. Cape Palliser – walk to the Putangirua Pinnacles, see fur seals, Ngawi fishing village and Cape Palliser lighthouse.

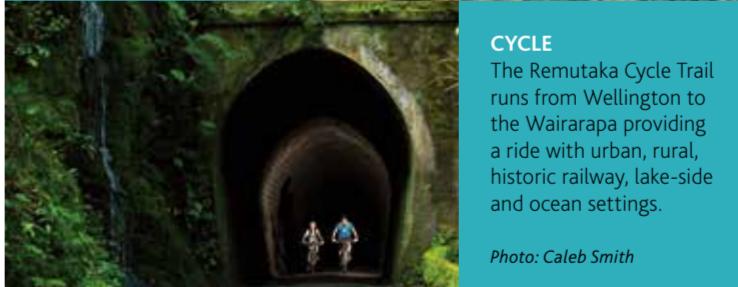
Photo: Jack Austin



WALK

A walk in the Wairarapa can be anything from a short lakeside stroll to a multi-day tramp along the coast or in the bush-clad Tararua Ranges.

Photo: Jack Austin



CYCLE

The Remutaka Cycle Trail runs from Wellington to the Wairarapa providing a ride with urban, rural, historic railway, lake-side and ocean settings.

Photo: Caleb Smith



GETTING TO THE WAIRARAPA

It's just over an hour's drive from Wellington City, over the Remutaka Pass, making it easy to connect with inter-island ferries or Wellington Airport. Coming from the north? Fly into Palmerston North – just an hour from the region.

A commuter train links Wellington with Masterton, Carterton, Greytown and Featherston with a local bus service onto Martinborough. There are several train departures on weekdays and a weekend service (by bus on Sunday). Call Metlink for bus and train info 0800 801 700 or www.metlink.org.nz Wairarapa i-SITES – your first stop for information and bookings in the Wairarapa and throughout New Zealand.

Masterton Visitor Centre
Corner Bruce & Dixon Streets, Masterton (next to Aratoi). Open 7 days.
T 06 370 0900 E info@wairarapanz.com

Martinborough Visitor Centre
The Square, Martinborough. Open 7 days.
T 06 306 5010 E bookings@wairarapanz.com

www.wairarapanz.com

[@wairarapa](https://www.facebook.com/wairarapa)
[#wairarapa](https://www.instagram.com/wairarapa)

TOP LOCAL EVENTS

- Toast Martinborough
- Wairarapa Wines Harvest Festival
- Golden Shears
- NZ Cycle Classic
- Castlepoint Beach Races



Greytown
Boutique Shopping
★ Cobblestones Museum
★ Greytown Trail to Woodside
DRIVING TIMES
15 mins to Martinborough
10 mins to Carterton
20 mins to Masterton

Carterton
Heart of the Wairarapa
★ Tararua Forest Park
★ Fensham Reserve
DRIVING TIMES
10 mins to Greytown
10 mins to Masterton
25 mins to Mount Holdsworth

Featherston
Cycle Trail and Booktown
★ Lake Domain Reserves
Walkway
★ Remutaka Cycle Trail
DRIVING TIMES
10 mins to Greytown
15 mins to Martinborough
1 hour to Wellington

Martinborough
Wine Village
★ Cellar doors and vineyard cafes
★ Dark Sky viewing
DRIVING TIMES
15 mins to Greytown
25 mins to Gladstone
30 mins to Lake Ferry

Gladstone
Vineyards
★ Cellar doors
★ Dark Sky viewing
DRIVING TIMES
15 mins to Carterton
15 mins to Masterton
25 mins to Martinborough

Masterton
★ Top spot for families
★ Queen Elizabeth Park
★ Arts Quarter
DRIVING TIMES
20 mins to Mount Holdsworth
20 mins to Pūkaha, Mount Bruce
1 hour to Castlepoint & Riversdale

TOURING IN THE WAIRARAPA
In a car, or on a bike, the Wairarapa Valley is tailor-made for cruising. SH2 joins up some of our towns while quiet roads-less-travelled take you through rolling farmland. They're so close together, connect them up next time you're in the neighbourhood.

MARTINBOROUGH

MAP KEY
 ● Cellar Door (Open for tastings and sales all year round)
 ● Cellar Door (Open for tastings and sales weekends only)
 ● Cellar Door (Call first, open by appointment only)
 ● Vineyard Food
 ● Vineyard Picnic Area
 ● Vineyard Accommodation
 ● Visitor Centre
 ● Marty Mural Trail

Making a booking for lunch is recommended. If there are more than 6 of you tasting please book. Opening hours vary in winter. Check at Visitor Centres or www.wairarapa.com

Lighthouse Gin
89 Martins Road, Martinborough
T 06 306 9122 E enquiries@lighthousegin.co.nz
W lighthousegin.co.nz
Handcrafted, small batch gin made in Martinborough by Rachel Hall using a 13 year old recipe. Available to taste at the Te Kairanga Cellar Door.

Martinborough Brewery
10 Ohio Street, Martinborough T 06 306 6249
E info@martinboroughbrewery.co.nz
W martinboroughbeer.com
Enjoy craft beer from our boutique brewery located in the heart of Martinborough. Fully licenced, well-appointed bar and off licence sales.

Martinborough Wine Merchants
6 Kitchener street, Martinborough T 06 306 9040
E info@martinboroughwinemerchants.com
W martinboroughwinemerchants.com
For the largest range of Martinborough and Wairarapa wines in the world! Also NZ spirits, olive oil, Martinborough Wine Walks (guided tours), bike hire and more!

The Wine Bank
1-3 Memorial Square, Martinborough T 06 382 2606
E info@thewinebank.nz
W thewinebank.nz
A unique self-service wine tasting experience with 60+ local wines available for tasting and by the glass, delicious small plates, off-license sales, private functions, venue hire.

GLADSTONE & MASTERTON VINEYARDS

Gladstone Vineyard
340 Gladstone Road, RD 2 Carterton T 06 379 8563
E info@gladstonevineyard.co.nz W gladstonevineyard.co.nz
The foremost vineyard at Gladstone to sample award-winning wines in an idyllic family friendly setting. Open daily for tastings and wine by the glass. BYO picnic or purchase a cheese platter.

Johner Estate Winery
359 Dakins Road, Gladstone, follow the signs
T 06 370 8217 E johner@wise.net.nz W johner-estate.com
Wines with personality, handcrafted from the vineyard to the glass. Traditionally made classical varieties. We welcome you at our cellar door to taste our wide range of memorable wines.

Le Grá Vineyard and Winery
42 Loopline Road, Opaki, Masterton.
T 027 448 6433 E n.geary@kinect.co.nz W legravineyard.co.nz
A family run boutique winery on the Opaki plains just off SH2, north of Masterton. We produce handcrafted award-winning wines in our small winery.

Urlar
140 Dakins Road, Masterton T 06 370 1935
E info@urlar.co.nz W urlar.co.nz
Urlar is a 30 hectare vineyard managed utilising organic and biodynamic practices. Our passion is to produce wines of structure, texture and complexity which speak of their origins.

Cottier Estate
290 Dakins Road, East Taratahi, Gladstone T 06 377 4335 or 021 962 102 E sales@cottierestate.co.nz W cottierestate.co.nz
Next to the Ruamahanga River, Cottier Estate is a stunning destination. Taste boutique wines in our relaxed tasting areas and beautiful gardens.

LUNA ESTATE CELLAR DOOR & KITCHEN
Asian inspired menu with Dumplings a speciality. Spend time out on our elevated terrace or lounge al fresco amongst our gardens and sculptures. Fine wine, impeccable surroundings and knowledgeable staff make a visit to Luna an unforgettable experience!

133 Puruatanga Road, Martinborough T 06 306 9360
W lunaestate.co.nz

THE VINEYARD CAFÉ AT MARGRAIN VINEYARD
Unparalleled vineyard views and outdoor seating areas right next to the vines – fantastic sandstone terrace, sundrenched patio, and the expansive lawn area with picnic tables. Breakfast, Lunch, Coffee, Platters, Wine. Enjoy the fireplaces for cosy relaxed indoor dining.

Cnr Princess Street & Huangarua Road, Martinborough T 06 306 8333
W thevineyardcafe.co.nz

TIROHANA ESTATE VINEYARD & RESTAURANT
Spoil yourself. Enjoy lunches or light bites meals, sumptuous dinners or cocktails in the elegant restaurant or on the sunny terraces overlooking the award-winning boutique vineyard. Cellar Door tastings and sales. Events throughout the year. Weddings and corporate groups welcome.

42 Puruatanga Road, Martinborough T 06 306 9933
W tirohanaestate.com

Alana Wines
50 Kitchener Street, Martinborough T 06 306 9122 E enquiries@alana.co.nz W alana.co.nz
Alana Wines is a boutique wine producer nestled in the heart of the Martinborough township producing a variety of small batch, premium wines.

Alexander Vineyard
101 Hinakura Road, Martinborough T 06 306 8171 E info@alexandervineyard.co.nz W alexandervineyard.co.nz
Meet the owner/winemakers at their new cellar door and taste their multi-award winning wines. Open weekends & holidays late October – March and by appointment.

Ashwell Vineyards
5 Vintners Lane, Martinborough T 06 306 9179
E ashwellvineyards@xtra.co.nz
Award winning wines, Pinot Noir, Chardonnay and Sauvignon Blanc.

Ata Rangi
Puruatanga Road, Martinborough T 06 306 9570 ext 6
E visit@atarangi.co.nz W atarangi.co.nz
We welcome visitors daily by appointment for personalised tasting at 11am & 2pm. Please contact us to join a tasting session: spaces are limited. Wine Shop open for purchases daily.

Big Sky Wines
415 Te Muna Road, Martinborough T 027 4248974
E info@bigskywines.co.nz W bigskywines.co.nz
Famous for our world class Pinot Noir and Gruner Veltliner. Cellar door, by appointment, for passionate wine lovers.

Cambridge Road
32 Cambridge Road, Martinborough T 06 306 8959 or 027 526 2069
E sales@cambridgeroad.co.nz W cambridgeroad.co.nz
Natural wine, beer, cider, cheese, charcuterie & olives in our courtyard. Open most days 11am-5pm, or by appointment.

Colombo Martinborough
107 Todds Road, Martinborough T 027 356 0546 or 027 356 0545
E info@colombo.co.nz W colombo.co.nz
Visit our boutique cellar door to taste our wines and enjoy gourmet pizzas and platters in a relaxed environment set amongst the vines. Available for private functions.

Coney Wines – Trio Restaurant
Dry River Road, Martinborough T 06 306 8345
E info@coneywines.co.nz W coneywines.co.nz
The quintessential vineyard experience, dining amongst the vines. Delicious cuisine matched with award-winning Coney wines. Open weekends and public holidays, plus Fridays in summer. Closed Aug/Sept.

Grava
50 Kitchener Street, Martinborough P 021 0834 3215
E info@grava.nz W grava.nz
Visit us at the Grava cellar door, and sample our magnificent single vineyard wines where they are crafted.

Hamden Estate
214 Dry River Road, Martinborough T 027 484 8439
E info@hamdenestate.co.nz
We produce elegant Pinot Noir and food friendly white wines on the Dry River Terraces. Try these while relaxing in our cellar door. Open most weekends and throughout the summer holidays.

Haythornthwaite Wines
45 Omarere Road, Martinborough T 06 306 9889
E wines@HT3wines.co.nz W HT3wines.co.nz
Boutique family owned vineyard specialising in Gewurztraminer, Pinot Gris and Pinot Noir. The cellar door is open most days throughout the year. In addition to tastings, wine by the glass and gourmet platters are available all year.

Julicher
301 Te Muna Road, Martinborough T 06 306 8575
E info@julicher.co.nz W julicher.co.nz
A family owned 20 hectare vineyard, planted in Pinot Noir, Chardonnay, Sauvignon Blanc and Riesling. Hard work and an ideal terroir have resulted in 3 Champion Trophy-winning wines, plus numerous other awards.

Luna
139 Puruatanga Road, opposite Todds Road T 06 306 9360
E cellardoor@lunaestate.co.nz W lunaestate.co.nz
Secluded cellar door, kitchen and landscaped gardens provide a stunning setting to taste and enjoy classic cool climate wines. Family friendly and able to cater for small or large groups. Open daily.

Margrain Vineyard
Cnr Princess St and Huangarua Rd, Martinborough T 06 306 9292
E info@margrainvineyard.co.nz W margrainvineyard.co.nz
Established in 1992, family owned Margrain offers the complete vineyard experience: Cellar Door open 7 days, accommodation, conference facilities, winery tours and The Vineyard Café.

Martinborough Vineyard
127 Todds Road, Martinborough T 06 306 9122
E info@martinboroughvineyard.co.nz W martinboroughvineyard.co.nz
An iconic, pioneering producer established in 1980 and committed to the perfection of Pinot Noir. Available to taste at the Te Kairanga Cellar Door.

Moy Hall Wines
1 Martins Road, Martinborough P 06 929 7305
E bookings@moyhall.nz W moyhall.nz
Taste homegrown wines from the Scottish longhouse set in the vineyard, paired with an extensive lunch menu. Open most days. Lunch bookings recommended for weekends.

Muirlea Rise
275 Te Muna Road, Martinborough T 06 306 9332
E info@muirleairise.com W muirleairise.com
Classic handmade wines and the makers of our famous Apres, and yes we use cork! "Wines with soul". Open Sat to Tues 11am-5pm. Other times by arrangement.

On Giants' Shoulders
31 Princess Street, Martinborough P 022 382 2606
E wine@ongiantsshoulders.co.nz W ongiantsshoulders.co.nz
Open daily for visits by appointment. Tastings are intimate and informative experiences guided by owners Braden or Gabrielle Crosby. Contact them for reservations and times.

Palliser Wines
Kitchener Street, Martinborough T 06 306 9019
E info@palliser.co.nz W palliser.co.nz
Open daily for premium wine tasting. Book ahead for winery tours, barrel tasting, cheese pairing. Lunch available during summer.

Poppies Martinborough
91 Puruatanga Road, Martinborough T 06 306 8473
W poppiesmartinborough.co.nz
It's very personal, Poppy makes the wine Shayne manages the vines. It's the only place you can find exclusive Poppies Martinborough wines. Relax in the stylish tasting room with wine and a platter.

Schubert Wines
57 Cambridge Road, Martinborough T 06 306 8505
E tastingroom@schubert.co.nz W schubert.co.nz
Visit us at our boutique tasting room for a tasting or relax with a glass of our world class wines. Open every day from 11am to 3pm.

Stonecutter
139 Todds Road, Martinborough T 06 306 6009
E sales@stonecutter.co.nz W stonecutter.co.nz
Artisan wines. Open Fri – Sun 11am – 4pm, other days by appointment. Book our "Wine Tricks" Vineyard Tour – taste amongst the vines – 11.30am.

Te Kairanga
89 Martins Road, Martinborough T 06 306 9122
E info@tekaيرانga.co.nz W tekaيرانga.co.nz
Taste our internationally celebrated wines in the historic setting of Martinborough founder John Martin's 130-year old cottage and shaded grounds.

Tiwaikawa Wines
52 Kitchener Street, Martinborough T 027 440 8143
E tiwaikawawines@xtra.co.nz W tiwaikawawines.co.nz
Enjoy an informative tasting with the owner/winemaker and a platter of local produce in a sheltered vineyard setting. Thurs – Sun 11.30am – 5.30pm (4.30pm Winter).

Tirohana Estate
Puruatanga Road, Martinborough T 06 306 9933
E info@tirohanaestate.com W tirohanaestate.com
Fine and casual dining, Chaine de Rotisseurs restaurant, al fresco terraces, picturesque location, special events, weddings, emporium gift shop, atmospheric cellar door. Open daily.

Vynfields
22 Omarere Road, Martinborough T 06 306 9901
E info@vynfields.com W vynfields.com
Join us at our historic homestead and spacious lawn for certified organic wine tasting and platters. Vineyard cottage is also available. Cellar door opens daily.

